



**TYPE**  
W50/50/0690 (M5509)

# SPORT MESH

# SPORT MESH • W50/50/0690 (M5509)

## LIST OF PROPERTIES

		W50/50/0690
<b>MATERIAL COMPOSITION</b>		
FABRIC		100 % PES / 1100 DTEX
BINDING		1/1
WEIGHT	DIN EN ISO 2286/2 1998	250 [+10] G/M <sup>2</sup>
CONSTRUCTION WARP		5 [+0,5] THR/CM
CONSTRUCTION WEFT		5 [+0,5] THR/CM
FABRIC WEIGHT	DIN EN ISO 2286/2 1998	120 G/M <sup>2</sup>
COATING WEIGHT	DIN EN ISO 2286/2 1998	130 G/M <sup>2</sup>
TENSILE STRENGTH WARP	EN ISO 1421/1 1998	≥ 1600 N / 5 CM
TENSILE STRENGTH WEFT	EN ISO 1421/1 1998	≥ 1600 N / 5 CM
TENSILE STRENGTH ELONGATION WARP	EN ISO 1421/1 1998	≥ 20 %
TENSILE STRENGTH ELONGATION WEFT	EN ISO 1421/1 1998	≥ 20 %
SHRINKAGE AT 200°C / 10 MIN. WARP	DIN 53354 1981	≤ 3,5 %
SHRINKAGE AT 200°C / 10 MIN. WEFT	DIN 53354 1981	≤ 2,5 %
THICKNESS	DIN 5084	0,60 MM
TEMPERATURE RESISTANCE	DIN EN 1876/2 1998	-30/+70 °C
LIGHT FASTNESS (EXCEPT WHITE)	ISO 105 B02 1988	6 - 8
FIRE BEHAVIOUR	ISO 3795 1989	< 100 MM/MIN
APPLICATION		MESH

All our technical characteristics are indicative.



100 % PES  
1100 DTEX



250 G/M<sup>2</sup>



1600 N / 5 CM



-30/+70 °C  
LIGHT FASTNESS 7 - 8



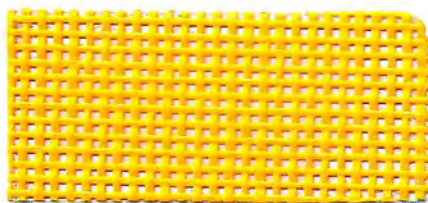
< 100 MM/MIN

**Ⓢ THIS IS A STANDARD PRODUCT.**

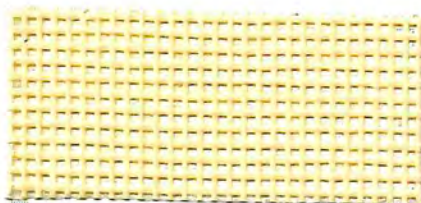


FOR MORE INFORMATION CHECK OUR WEBSITE  
[WWW.SIOEN.COM/LEISURE&ADVERTISING](http://WWW.SIOEN.COM/LEISURE&ADVERTISING)

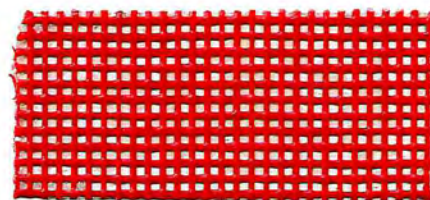
SPORT • W50/50/0690 (M5509)



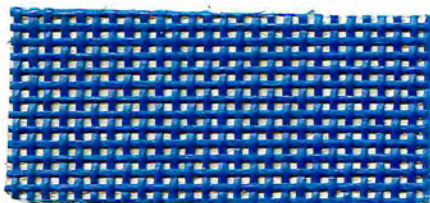
1398 - 210 CM ☺



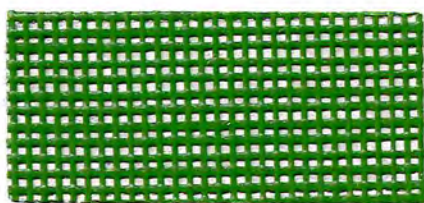
1399 - 210 / 320 CM ☺



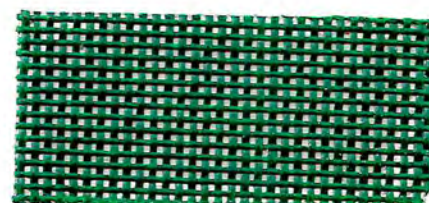
3130 - 210 CM ☺



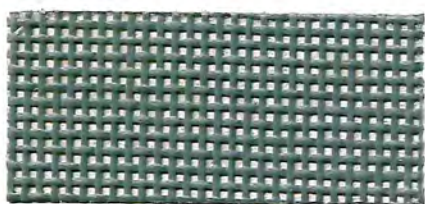
5601 - 210 CM ☺



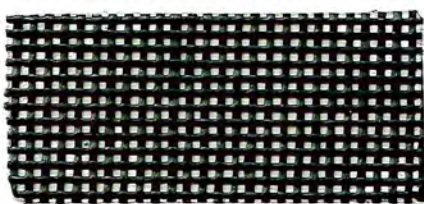
6601 - 210 / 320 CM ☺



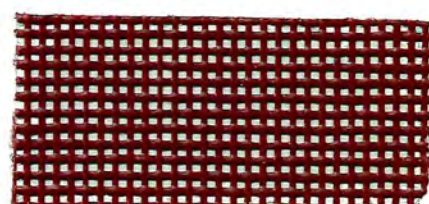
6602 - 210 CM ☺



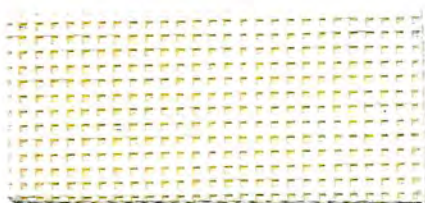
7601 - 210 CM ☺



7999 - 210 / 320 CM ☺



8601 - 210 CM ☺



9917 - 210 CM ☺





# CAPACITY, FLEXIBILITY AND LARGE PRODUCT PORTFOLIO

We master 5 coating techniques; we have over 250 weaving looms; we have 10 coating lines; our own spinning mill, 30 plants in 14 countries, we master the entire pigment paste production process, we market over 30 000 products.

- 1 **OUR QUALITY & SERVICE FLEXIBILITY:  
OUR STRENGTHS = YOUR GUARANTEE.**
- 2 **OUR TEAM:  
PEOPLE MAKE THE DIFFERENCE.**
- 3 **OUR PRODUCTION PLANTS:  
WE CONSTANTLY INVEST IN KEEPING ALL OUR  
FACTORIES STATE-OF-THE ART**

## “55 years

With over 55 years in the business, we have more accumulated know-how of textile coating technology and coated textile applications than any other company in the world. ”

### DEDICATED R&D CUSTOMIZED DEVELOPMENT

At our central research and development center, our dedicated team of professionals makes specialised technical textiles their daily business. Our new ranges, with new and exclusive yarn formulations, techniques and lacquering, the result of intensified collaboration between our researchers, external specialists, universities.



**SIOEN** INDUSTRIES

FABRIEKSTRAAT 23 | 8850 ARDOOIE | BELGIUM | T +32 51 74 09 00 | F +32 51 74 09 64 | INFO@SIOEN.BE | WWW.SIOEN.COM

**LEI  
SURE**  
ADVERTISING