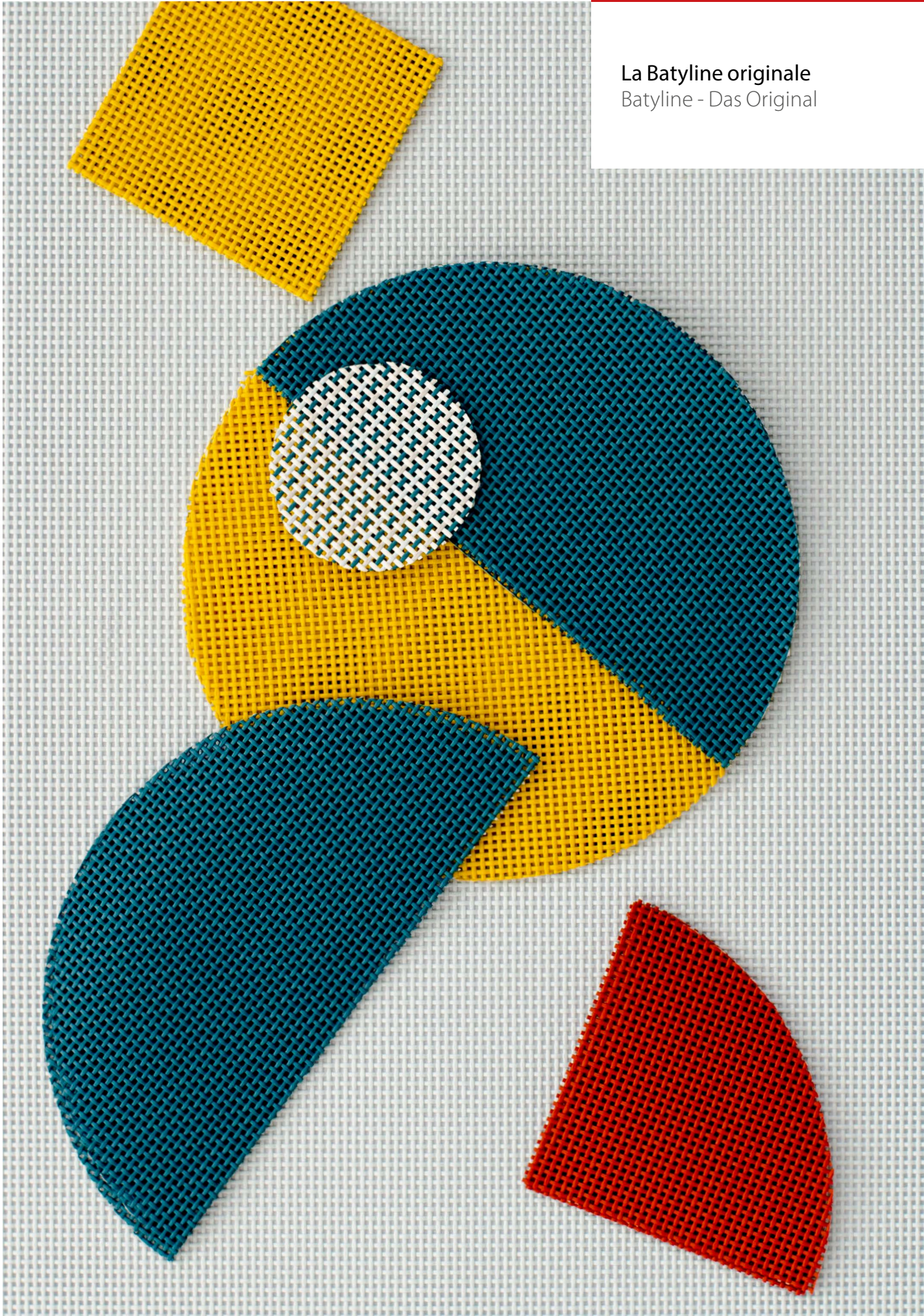


La Batyline originale
Batyline - Das Original

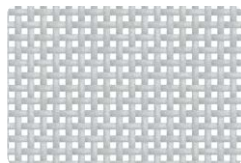




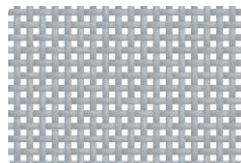
7407-5029



7407-5001



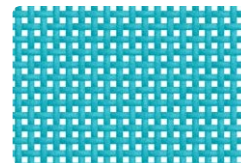
7407-5374



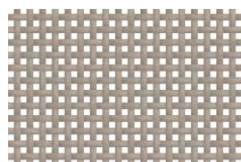
7407-5003



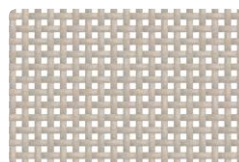
7407-50881



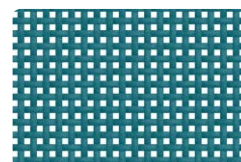
7407-5347



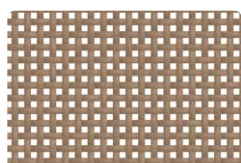
7407-5014



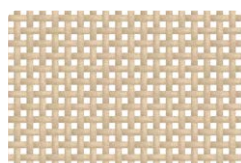
7407-5376



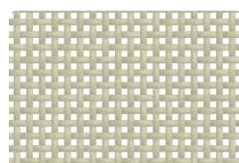
7407-50865



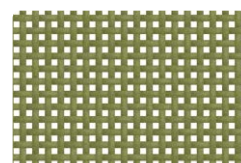
7407-50882



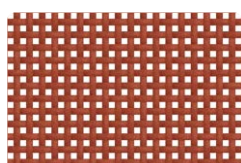
7407-5378



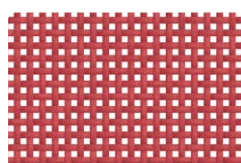
7407-50880



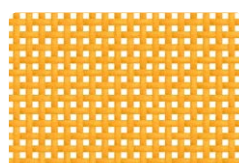
7407-50885



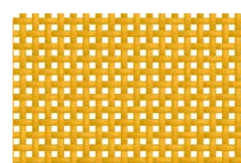
7407-50866



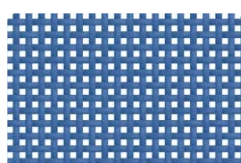
7407-5011



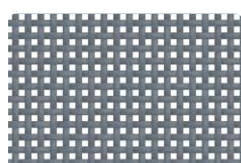
7407-5017



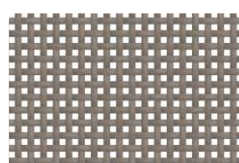
7407-50886



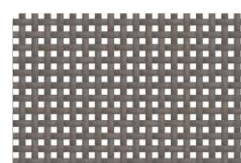
7407-5007



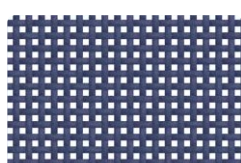
7407-5004



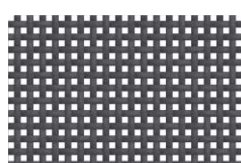
7407-50070



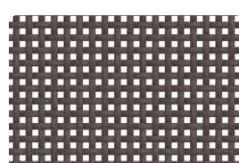
7407-5015



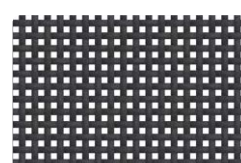
7407-5006



7407-5700



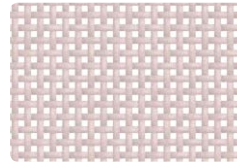
7407-5048



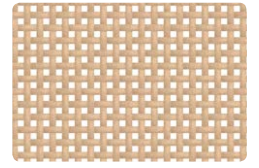
7407-5005

gamme standard
standard-sortiment

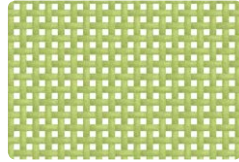
sur demande
auf anfrage



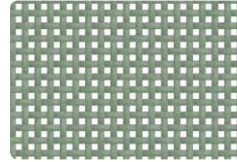
7407-50888



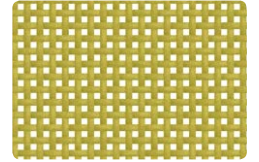
7407-5013



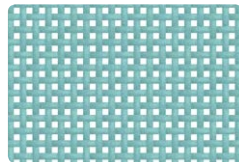
7407-5063



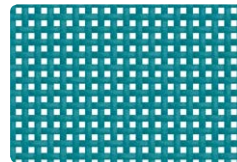
7407-5365



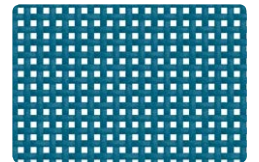
7407-5367



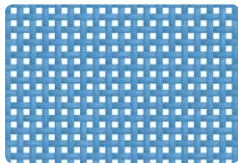
7407-5363



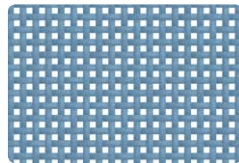
7407-5364



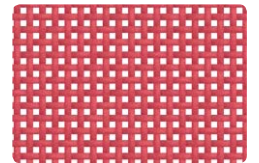
7407-50418



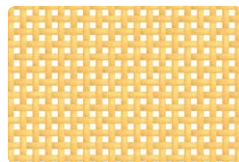
7407-5009



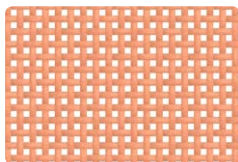
7407-50416



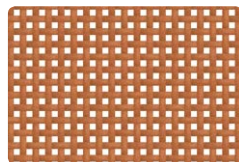
7407-50887



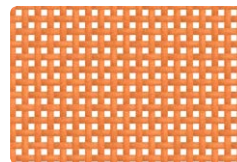
7407-5018



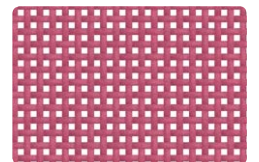
7407-50417



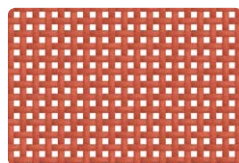
7407-5016



7407-5329



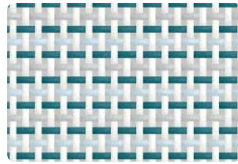
7407-5336



7407-5381

multicolore

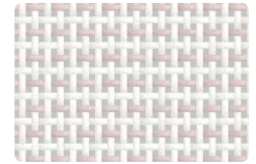
mehrfarbig



7407-50884



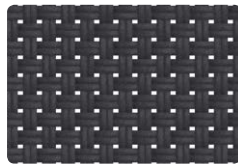
7407-50883



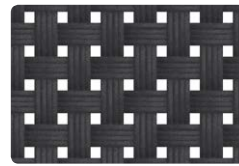
7407-50889*
**sur demande - auf anfrage*

multi-fils

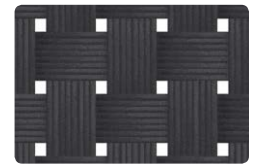
multifilament-garne



7406-5005



7350FR-5005*
**sur demande - auf anfrage*



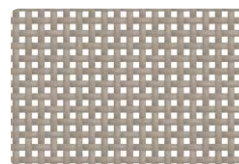
7388FR-5005*
**sur demande - auf anfrage*

gamme ignifuge

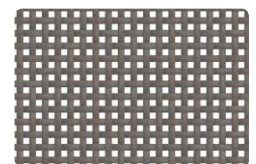
auf anfrage



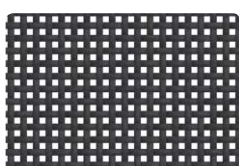
7407FR-5001



7407FR-5014



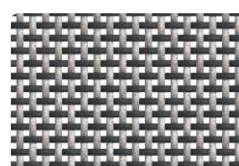
7407FR-5015



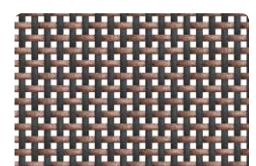
7407FR-5005



7407FR-5260



7407FR-5261



7407FR-5266

Les coloris et contextures présentés dans ce document sont donnés à titre indicatif.
Die im vorliegenden Dokument präsentierten Farbtöne und Fadendichten haben rein informativen Charakter.

Applications - Anwendungen

Bains de soleil, chaises et accessoires - Sonnenliegen, Stühle und Accessoires
Sièges de bureau - Büro- und Konferenzstühle



- **Durable:** une résistance extrême à l'extérieur sans affaissement grâce à notre technologie SmartYarn.
- **Langlebigkeit:** Extrem beständig im Outdoor-Bereich, Kein Ausbeulen dank unserer SmartYarn Technologie.
- **Simplicité:** haut niveau de transparence pour un design léger, chaîne et trame réversible.
- **Einfachheit:** hoher Grad an Transparenz und leichtes Design, Kett- und Schussfäden beidseitig verwendbar.
- **Sûre et pérenne:** Batyline Iso est sans phtalate et recyclable grâce à notre procédé Txyloop.
- **Sicher und nachhaltig:** Batyline Iso ist phthalatfrei und dank unseres Txyloop Verfahrens recycelbar.

L'esthétique classique
en 42 couleurs

Klassische Schönheit in 42
Farben



Batyline

Iso

7407

7407FR

7406

7350FR

7388FR

■ Propriétés techniques - Technische Daten

Normes - Normen

Poids - Gewicht	500 g/m ²	660 g/m ²	725 g/m ²	880 g/m ²	EN ISO 2286-2
Laize - Rollenbreite	180 cm				
Porosité - Porosität	22 %	11 %	10 %	5 %	

■ Propriétés physiques - Physikalische Eigenschaften

Résistance rupture (chaîne/trame) Reißkraft (Kette/Schuss)	240/240 daN/5cm	360/330 daN/5cm	430/410 daN/5cm	350/350 daN/5cm	EN ISO 1421
Allongement sous charge 20 daN (chaîne / trame) Reißdehnung bei 20 daN (Kette/Schuss)	≤ 2,5 % / ≤ 2,5 %		≤ 2 % / ≤ 2 %	≤ 1 % / ≤ 1 %	EN ISO 1421
Résistance à l'abrasion Abriebfestigkeit	>120 000 cycles				EN ISO 12947-2 Martindale
Résistance aux intempéries Witterungsbeständigkeit	GS=4 at 700h				ASTMG154: UVA340
Résistance moisissures Schimmelbeständigkeit	Méthode A, Excellent Verfahren A, Ausgezeichnet				EN ISO 846-A
Températures extrêmes d'utilisation Maximale Anwendungstemperaturen	-30°C / +70°C				

■ Réaction au feu - Brennverhalten

Classement - Klassifikation	M2				NFP 92-507
	B1				DIN 4102-1
	conforme pass				CALTB 117
	conforme pass	conforme pass	conforme pass	conforme pass	IMO MSC.307(88) (2010 FTP Code) Annex 1 Part 8
Euroclass	B-s2,d0				EN 13501-1

■ Systèmes de management - Managementsysteme

Qualité - Qualität	ISO 9001
Environnement - Umwelt	ISO 14001

■ Certifications, labels, garanties - Zertifizierungen, Labels, Garantien



**5 years
garantie**

**Phthalate
free**

**Smart
Yarn**



With S+ Serge Ferrari goes further than the Standards...
(consult us for further information)

■ Outils et services - Tools und Serviceleistungen

- Guide de confection et instructions de nettoyage disponibles sur demande
Leitfaden & Reinigungshinweise auf Anfrage erhältlich
- Possibilité de visualiser et de simuler des couleurs et tissages personnalisés sur notre logiciel Penelope.
Kundenspezifische Farbtöne und Webungen können mit unserer Software Penelope visualisiert und ausprobiert werden.

Les caractéristiques techniques indiquées sont des valeurs moyennes avec une tolérance de +/- 5%. Nos produits sont sujets à des évolutions en fonction des progrès techniques et nous nous réservons le droit d'en modifier les caractéristiques à tout moment. Il est de la responsabilité de l'acheteur de nos produits de vérifier la validité des données ci-dessus.

Bei den angegebenen technischen Daten handelt es sich um Durchschnittswerte mit einer Abweichung von +/- 5%. Unsere Produkte unterliegen Änderungen aufgrund des technischen Fortschritts. Wir behalten uns das Recht vor, die Eigenschaften unserer Produkte jederzeit anzupassen. Es obliegt dem Käufer unserer Produkte, die Gültigkeit der o.g. Daten zu überprüfen.

Serge Ferrari
lightweight + durable

Serge Ferrari SAS
+ 33 (0)4 74 97 41 33
sergeferrari.com

