



		396 ..
material composition	ISO 2076	100 % Polyester
fabric width	EN 1773	≈ 170 cm (66.9 inch)
weight	EN 12127	≈ 210 g/m <sup>2</sup> (6.2 Oz/yd <sup>2</sup> )
thickness	ISO 5084	≈ 0,25 mm (9.8 mil)
piece length		= ca. 60 m
flame resistance	EN 13501 / NFPA 701	flame retardant B1
crack resistance	ISO 7854-B	> 500.000 cracks
water pressure resistance	EN 120811	≥ 100 mbar (≥ 1000 mm)
water repellency	EN ISO 4920	≥ Note 4 (of 5)
oil repellency	EN ISO 14419	≥ Note 4 (of 8)
weather fastness	ISO 105-B04	≥ Note 6–7 (of 8)
light fastness	ISO 105-B02	≥ Note 6–7 (of 8)
colour fastness to rubbing	ISO 105 X-12	≥ Note 4-5 (of 5) <sup>1</sup> / ≥ Note 4-5 (of 5) <sup>2</sup>
chlorine resistance	ISO 105-E03	≥ Note 4–5 (of 5)
colour fastness to migration	ISO 105-X10	≥ Note 4–5 (of 5) <sup>3</sup> / ≥ Note 3–4 (of 5) <sup>4</sup>
max tensile strength	ISO 13934-1	≥ 1500 N <sup>5</sup> / ≥ 1000 N <sup>6</sup>
elongation at break	ISO 13934-1	≥ 25% <sup>5</sup> / ≥ 20% <sup>6</sup>
abrasion resistance	ISO 12947-2	≥ 100.000 rubs
pilling resistance	ISO 12945-2	≥ Note 4–5 (of 5)
temperature resistance	DIN 53361	-40 / +90°C
coating		Polyuritan + FR + SFC

1 dry | 2 wet | 3 bright colours | 4 dark colours | 5 warp | 6 weft

**Note on dyestuff migration:** Despite the use of the latest manufacturing processes and materials, there are external influences that can have an effect on the so-called migration behaviour (dye migration) of chemical substances. In order to avoid dye migration at swela outguard, there should be no direct contact with other textiles (especially PVC materials). This information must be taken into account during further processing.



## SWELA OUTGUARD FR

An extremely versatile, high-quality outdoor fabric. Thanks to a flame-retardant coating it is a perfect match whenever a certain safety standard is desired.



02/19 7608043 Subject to technical modifications and colour variations. Technische Änderungen und Farbdifferenzen vorbehalten.



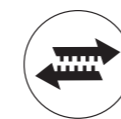
UV-resistant and non-light sensitive



Dirt and water repellent



Mould resistant



Very high abrasion resistance

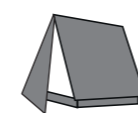


Low maintenance

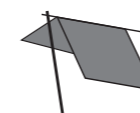


Tear-proof

### EXAMPLE APPLICATIONS



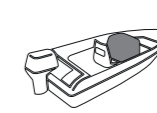
tents



solar sails



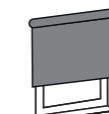
baldachin/  
pergola



console cover



parasols



blinds



tarpaulin



winter  
tarpaulin

SWELA OUTGUARD FR



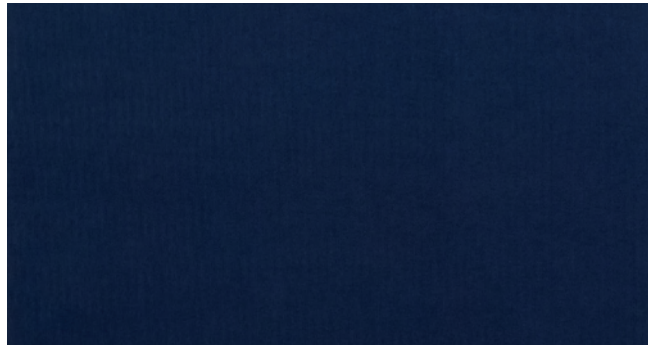
396 09 WHITE



396 27 CARAMEL



396 01 YELLOW



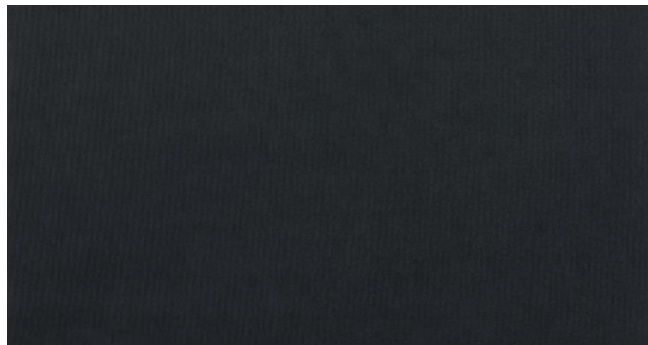
396 15 NAVY



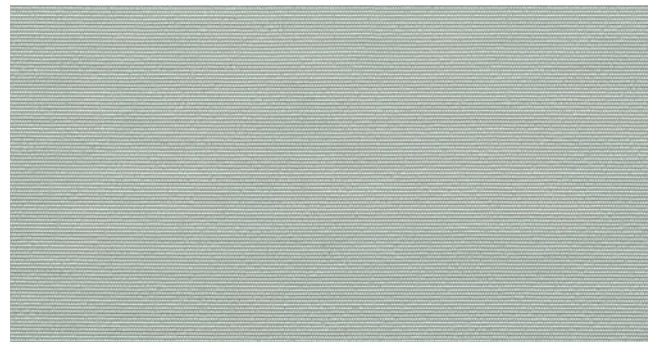
396 08 PEARL GREY



396 38 CHARCOAL



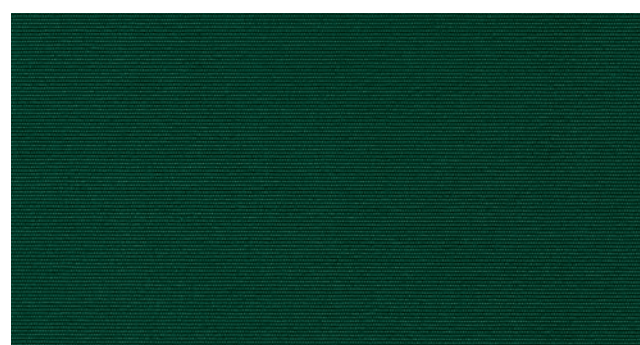
396 49 BLACK



396 18 SILVER GREY



396 01 YELLOW



396 26 FOREST GREEN



396 90 WARM SAND